

Nissan Engineering Standard
Standard Parts for Automobiles

NES	General rules for Coding Material
-----	-----------------------------------

1. SCOPE

This Standard specifies major items that are commonly used for design of the uniform material code.

2. MEANING OF TERMS

The meaning of major terms used in this Standard is as follows:

(1) Code

Code means a standard symbol system used for classification and arrangement of multiple items and events for a certain purpose.

(2) Design of code

Design of code means systematization of multiple items and events through classification and arrangement for a certain purpose and means provision of symbols based on the standardized system.

(3) Uniform code

Uniform code means the code commonly used in the entire company.

3. CODE CONFIGURATION

The code configuration shall be as follows:

3.1 Code symbol

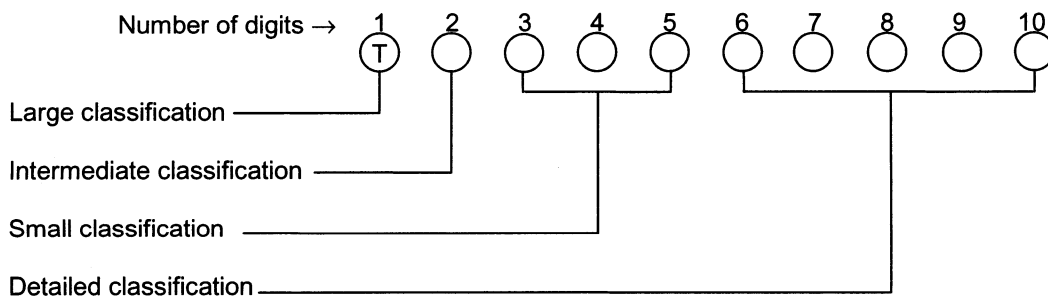
The code symbol shall be Arabic numerals in principle and alphabetical characters are used as necessary. I and O of alphabets shall not be used.

3.2 Digits of code

The digits of code shall be 10 maximum.

3.3 Code classification

The code classification shall be as follows:



- Remark
1. The large classification code shall be in accordance with the specification in 4.
 2. Intermediate classification, small classification and detailed classification shall be individually specified in NES and NEM.
The number of digits and their combinations may be changed. The number of digits for the code in the large classification shall be constant within 10 digits.

4. LARGE CLASSIFICATION CODE

The classification code shall be as in Table 1. Other codes not in this table shall not be used.

Table 1 Large classification code

Code	Material classification	Code	Material classification	Code	Material classification
1	Special steel	A	Cast/forged/heated tool	N	Office supplies
2	Normal steel	B	Machine tool	P	Work supplies
3		C	Unit welding tool	Q	—
4	Special steel	D	Unit assembly tool	R	—
5	Main material for casting	E	Press tool	S	Work request
6	Non-ferrous metal	F	Body assembly tool	T	Cutting tool
7	Paint	G	—	U	Working equipment
8	Assisting material	H	—	V	Machine repair parts
9	Welding rod	J	—	W	Standard parts for machines and tools
		K	Material for tool repair	X	—
		L	Packing material	Y	—
		M	Inspection tool	Z	—

- Remarks: 1. I and O of alphabets shall not be used.
2. The blank code shall not be used.

5. DESIGN STANDARD OF CODE

The design standard of code shall be as follows:

- (1) Codes shall be classified in accordance with 3., Code configuration. The code system shall have regularity in principle.
- (2) Codes shall be permanently used.
- (3) Codes shall have flexibility for partial revision along with progress of technology.
- (4) Existing codes shall be used as much as possible.

6. UNIFORM CODE

The uniform code used for the code configuration shall be as follows:

6.1 Plant code

The plant code shall be in accordance with Table 2.

Table 2 Plant code

Code	Plant	Code	Plant	Code	Plant
		P	Yokohama Plant	V	Iwaki Plant
K	Technical Center	T	Oppama Plant	W	Kyusyu Plant
M	Tochigi Plant	U	Zama Plant	Y	General Laboratory
				Z	Others

6.2 Vehicle type code

The vehicle type code shall be in accordance with either Table 3.1 or Table 3.2.
(This code is a reference.)

Table 3.1 Vehicle type code (1)

Code	Vehicle classification (classification by displacement)	
1	Large	3.0L min. gasoline
2		3.0L min. diesel
3	Inter- mediate	2.0L to less than 3.0L gasoline
4		2.0L to less than 3.0L diesel
5	Small	1.5L to less than 2.0L gasoline
6		1.5L to less than 2.0L diesel
7	Super small	1.0L to less than 1.5L gasoline
8		1.0L to less than 1.5L diesel
9		Fork lift

Table 3.2 Vehicle type code (2)

Code	Vehicle classification	Code	Vehicle classification
A	Laurel type	L	
B	Pulsar type	M	President type
C	Cedric type	N	Truck type
D		P	Sunny type
E	Vanette type	Q	
F	March type	R	Silvia type
G	Blue bird type	S	
H		T	
J	Skyline type	U	
K	Stanza type	V	

6.3 Part code

The codes for engine parts, axle parts, transmission parts and steering parts shall be in accordance with Table 4. Parts not specified in this table are not applicable.

Table 4 Part code

Code	Part classification	Part name	Code	Part classification	Part name
01	Engine parts 01 to	Cylinder block	23	Axle parts 20 to 59	Cage fixed joint
02		Front cover	24		Outer race with shaft
03		Cylinder head	25		
04		Connecting rod	26		Knuckle spindle
05		Rocker cover	27		Knuckle arm
06		Crankshaft	28		Front hub wheel
07					Rear hub wheel
08		Bearing cap	29		Brake drum
09		Flywheel ring gear			Rear brake drum
10		Camshaft	30		Carrier assembly
11		Sprocket pulley			Gear housing
		Engine bracket			Final drive
12		Exhaust manifold	31		Differential case
13		Intake manifold	32		Rear axle shaft
14		Camshaft bracket	33		Rear axle case complete
15		Bearing housing	34		Trunnion socket
16		Rotor with shaft	35		Transverse link
17		Impeller	36		Extension arm
18		Compressor housing	37		Torsion beam
19	Turbine housing	38	Rear spindle housing		
	Discharger	39	Link assembly		
	housing	40	Rear axle housing		
1A	Collector manifold	41			
20	Drive shaft tube	42	Road wheel		
21	Connector bar	43	Sleeve yoke		
22	Inner race	44	Drive shaft		

Table 4 (continued)

Code	Part classification	Part name	Code	Part classification	Part name
45	Axle parts	Cylinder body	74	Automatic transmission parts 70 to 78	Gear train parts
46		Member yoke torque			· Gear idler · Gear idler & park
47		Knuckle steering			· Shaft output · Gear output
48		Rear arm assembly			· Pinion reduction · Gear final
49		Disk brake rotor			· Pulley fixed primary · Pulley fixed secondary
50		Differential bevel side gear			· Pulley slide primary · Pulley slide secondary
51		Differential bevel pinion			
52		Hypoid drive gear			Oil pump parts
53		Hypoid drive pinion			· Gear oil pump inner
54		Compression rod bracket			· Gear oil pump outer · Rotor
55		Front drive shaft			· Housing oil pump · Cam ring
56		Front axle shaft			· Drum support · Cover oil pump
57		Rear drive shaft			
58		Slide joint housing			Clutch parts
59		Housing with shaft			· Clutch drum related parts (front, rear, low, high, reverse, hub, race inner, race outer)
60			· Plate retainer		
61	Manual transmission parts 60 to 69	Box parts	77	Valve parts	
		· Case transmission · Plate adapter		· Valve body inner · Valve body upper	
		· Extension rear · Housing clutch		· Valve body lower · Governor valve	
62		Shaft parts		· Lockup valve	
		· Shaft input · Shaft counter	78	Other parts	
		· Gear main drive · Shaft main	80		
63		Gear group I (1st speed to O/D)	81	Box parts	
		· Shaft main accessory gear		· Housing	
		· Shaft counter accessory gear		· Housing rear	
		· Shaft input accessory gear		· Housing end	
64		Gear group II	82	Gear group I (input side)	
		· Gear ring · Gear final		· Worm pinion	
		· Reverse related gear		· Shaft pinion	
		· Sub-transmission gear		· Column shaft	
65		Other parts	83	Gear group II (output side)	
	· Sleeve coupling · Gear clutch		· Nut · Piston		
	· Hub synchronizer · Cone synchronizer		· Shaft sector · Rack		
70		84	Other steering parts		
71	Automatic transmission parts	Box parts		· Stub shaft	
		· Housing converter · Cover side		· Valve body	
		· Extension rear · Case transaxle		· Valve shaft	
		· Case overdrive · Case auto-transmission	90	Chain support	
		· Body piston servo upper	91	Mast support	
		· Body piston servo lower	92	Drive axle support	
72		Torque converter parts	93	Axle center	
		· Converter · Impeller	94	Housing drive axle	
		· Turbine · Stator	95	Bell crank	
73		Planetary parts	96	Bracket drive axle	
		· Carrier · Pinion bracket	A1	Body parts	
		· Gear internal · Gear sun			
				Other parts	